

Kilkivan and Goomeri Health Services Guide

Last updated December 2020

Service Details

Kilkivan Community Health Centre, Cave Street, Kilkivan

For bookings and service information phone 0439 208 558 Monday - Friday from 9am-4pm

Doctor/Nurse Practitioner	Fortnightly - Wednesday and Thursday
Podiatrist	Weekly - Saturday*
Counsellor	Monthly - date to be arranged at booking time
Qld Health Womens Nurse	Cervical Screening and Womens Health. Visiting twice yearly - date to be arranged at booking time
Pharmacy	Pharmacist: Nicole Coombs Address: 1/10 Bligh Street, Kilkivan QLD 4600 Opening hours: Monday, Tuesday, Wednesday, Friday: 9.30am - 2.30pm Thursday: 9.30am - 4.00pm. Closed on weekends.

Goomeri

Service Details

Doctor	Every second Thursday at Goomeri Community Health Centre, 35 Moore Street. Call Murgon Wondai Medical Centre on 4168 2722
--------	--

Emergency

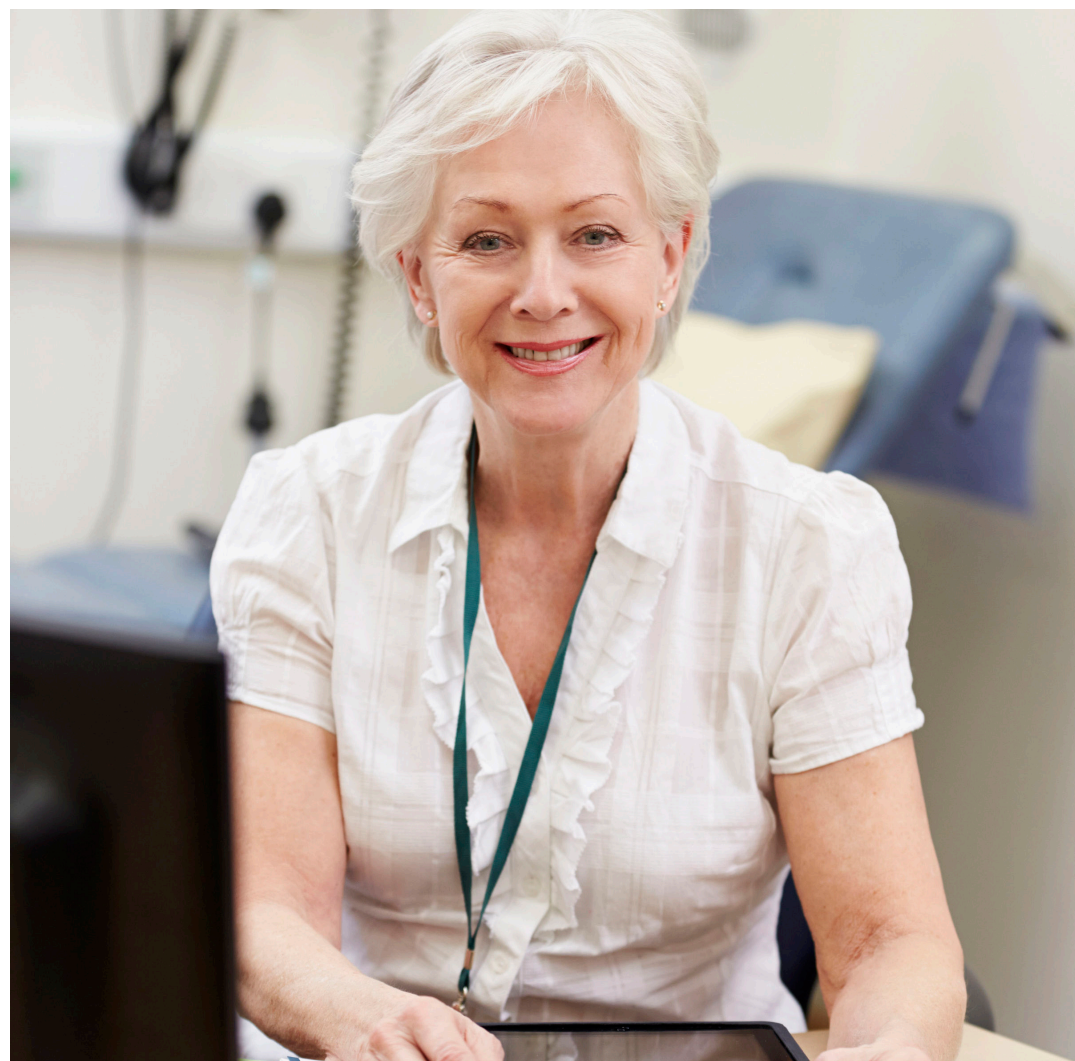
Unable to breathe?
Suspect heart attack or stroke?
Dial 000 for an ambulance

The Kilkivan First Responders Group will be notified by calling 000 who have access to Community Automated External Defibrillators

My Aged Care

If you have aged care needs or concerns the Australian Government's My Aged Care service can assist you with information and support to find appropriate services that meet your needs.

Call **My Aged Care** on 1800 200 422 or visit www.myagedcare.gov.au.
Available 8am-8pm weekdays, and 10am-2pm Saturdays



Community Services

Organisation	Service	Contact	Organisation	Service	Contact
13 HEALTH	Confidential phone service that provides health advice. Talk to a registered nurse 24/7 for cost of a local call.	13 HEALTH (13 43 25 84)	Meals on Wheels	Home delivered frozen meals on Wednesdays in Kilkivan, for people who require assistance. Eligibility assessment required for long-term clients.	5482 3342
1800 Respect	National service providing confidential information, counselling and support to people impacted by sexual assault, domestic or family violence and abuse.	1800 737 732	Mental Health Intake Team, PHN	The PHN processes psychology referrals from General Practitioners with a mental health care plan attached and from Non-Government & Hospital Mental Health Services. E: mentalhealthintake@ourphn.org.au .	1300 747 724
Beyond Blue	Support service 24 hours 7 days.	1300 224 636	National Disability Insurance Scheme (NDIS)	Provides funding to people with a permanent and significant disability to access the supports and services. W: www.ndis.gov.au	0429 549 707
Blue Care	Allied health, nursing, personal care & domestic services. Flexible respite social support group, social support individuals. NDIS package support provided.	1300 258 322	North Coast Aboriginal Corporation for Community Health (NCACCH)	Provides Aboriginal and/or Torres Strait Islander community members and their families with access to health providers (including GPs and allied health).	5346 9800
BreastScreen	Free breast cancer screening available in Gympie on Mondays, Tuesdays and some Saturdays. GP referrals are not required. W: www.breastscreen.qld.gov.au	13 20 50	Pregnancy, Birth and Baby	Speak to a maternal child health nurse for personal advice and guidance on pregnancy, birth, being a parent & raising a child. www.pregnancybirthbaby.org.au .	1800 882 436
Centacare	Community care services (home care packages), home maintenance, dementia care, disability support service, transport.	4162 5096 / 1300 236 822	Sexual Assault Helpline	Provides telephone support and counselling to anyone who has been sexually assaulted or abused and for anyone who is concerned or suspects someone they care about might have been assaulted or abused 7:30am- 11:30pm 7 days.	1800 010 120
Children's Therapy Centre	Works with children with developmental delays, disabilities & health conditions. Services such as speech language pathology, psychology, occupational therapy & physiotherapy. NDIS Service Provider.	5349 2020	STEPS Employment Solutions	A specialised employment provider assisting people back into the workforce who are out of work due to mental health.	5455 2750
DV Connect Mensline	Telephone service offering free confidential counselling, referral and support for men affected by domestic and family violence 9am to 12midnight, 7 days.	1800 600 636	Suncare Community Services	In-home aged care and community services, Consumer Directed Care through Home Care Packages.	1800 786 227
DV Connect Womensline	Telephone service offering free professional and non-judgemental telephone support for women experiencing family violence.	1800 811 811			
Graham House Transport	Volunteer transport to medical appointments, small co-payment required.	4169 5040			
Head to Health	Tips for maintaining good mental health & information on accessing mental health. W: headtohealth.gov.au .				
Health Direct	Confidential phone service that provides health advice. Talk to a registered nurse 24/7 for cost of a local call.	1800 022 222			
Kids Helpline	Kids helpline telephone counselling support 24 hours 7 days.	1800 55 1800			
Lifeline	Lifeline telephone crisis support 24 hours 7 days.	131114			
Little Haven Palliative Care	Telephone palliative care support, equipment loans and in-home visits to Kilkivan. Appointments in Gympie.	5482 9091			